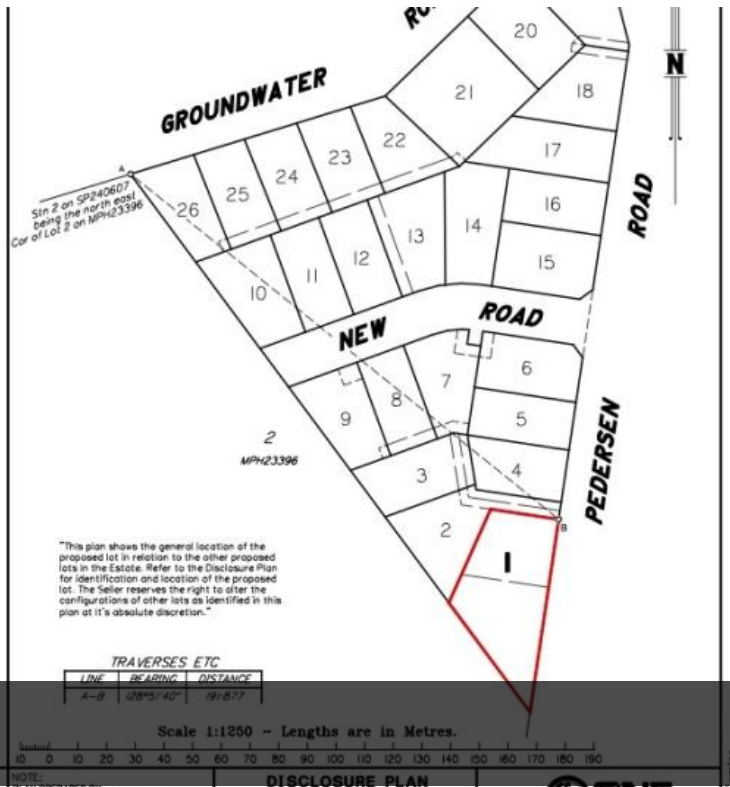
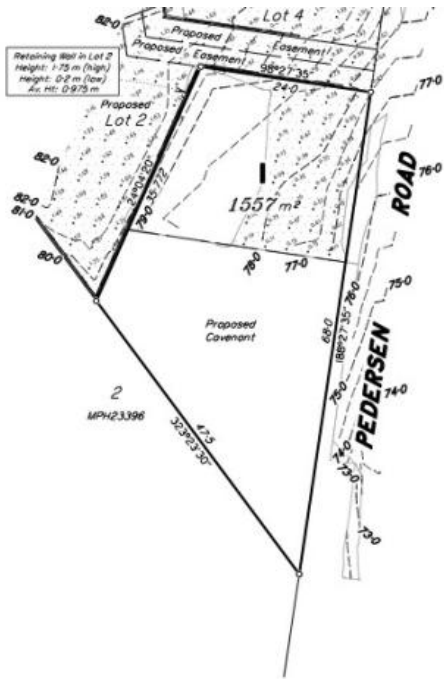


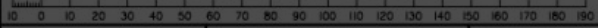
Sold



Lot 1 Pedersen Road, Southside

LINE	BEARING	DISTANCE
A-B	108°51'40"	191.877

Scale 1:1250 - Lengths are in Metres.



NOTE:
PLAN PREPARED BY:
SOUTH BURNETT SURVEYS PTY. LTD.
The dimensions and areas shown herein

DISCLOSURE PLAN

DESCRIPTION: PROPOSED LOT 1



LOT 1 PEDERSEN ROAD, SOUTHSIDE

Sunny View Estate – Corner of Groundwater Road and Pedersen Road, Southside

Welcome to Sunny View Estate – a brand-new residential community offering 26 generously sized, quality benched lots in the ever-popular Southside area of Gympie. Titles in this estate are due first quarter of 2026.

Located just minutes from schools, shopping centres, medical facilities, and the CBD, Sunny View Estate offers the perfect balance of modern convenience and relaxed living. Set in a peaceful, well-established part of town, it's an ideal choice for families, first-home buyers, or savvy investors seeking strong growth potential.

Each lot has been carefully prepared to make building simple and cost-effective, with benched lots, and quality infrastructure already in place. Wide streets and well-planned landscaping add to the estate's welcoming appeal, creating a neighbourhood you'll be proud to call home.

Whether you're ready to build now or planning for the future, Sunny View Estate is your chance to secure a great lifestyle in one of Gympie's most in-demand areas.

Discover the fresh appeal of Southside living – discover Sunny View Estate.

1,557 m²

Price SOLD for \$375,000

Property Type Residential

Property ID 945

Land Area 1,557 m²

AGENT DETAILS

Pete and Keryn Angle - 0438 864 158

OFFICE DETAILS

One Agency Gympie
0438 864 158



Although ONE Agency Gympie has provided all information related to this property to the best of our knowledge and resources, we shall not be held accountable or responsible for its accuracy. ONE Agency Gympie urge all buyers to conduct their own independent research and consult their own professionals to conduct due diligence before purchasing.

The above information provided has been furnished to us by the vendor/s. We have not verified whether or not that information is accurate and do not have any belief in one way or the other in its accuracy. We do not accept any responsibility to any person for its accuracy and do no more than pass it on. All interested parties should make and rely upon their own inquiries in order to determine whether or not this information is in fact accurate.