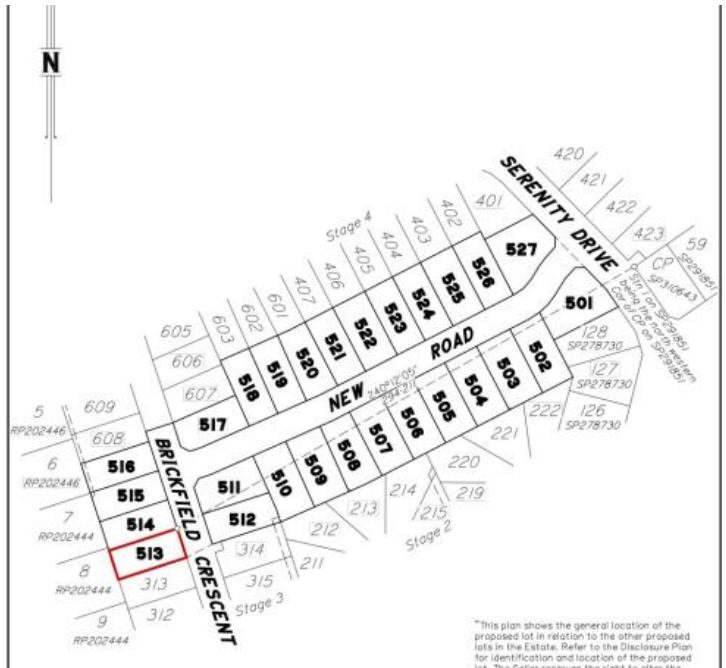


Sold



"This plan shows the general location of the proposed lot in relation to the other proposed lots in the Estate. Refer to the Disclosure Plan for identification and location of the proposed lot. The Seller reserves the right to alter the boundaries of the lots in accordance with the plan of its absolute discretion."

## Lot 513 Maiden Street, Southside

Scale 1:2000 - Lengths are in Metres.



NOTE: PLAN PREPARED BY SOUTH BURNETT SURVEYS PTY. LTD. The dimensions and measurements herein are approximate and may vary slightly.

DISCLOSURE PLAN DESCRIPTION: PROPOSED LOT 513



**ONE AGENCY GYMPIE**

Crest Estate is a residential development of over 100 lots, located in the established suburb of Southside in Gympie. The development has set a quality benchmark for residential living in Gympie with fully benched lots, extensive use of sandstone retaining walls, high quality entry statement and landscaping. Located just off of Groundwater Road this estate is sure to please everyone.



## LOT 513 MAIDEN STREET, CREST ESTATE, SOUTHSIDE

680m<sup>2</sup>

Crest Estate is a residential development of over 100 lots, located in the established suburb of Southside in Gympie – via Sunshine Coast, South East Queensland. The development has set a quality benchmark for residential living in Gympie with fully benched lots, extensive use of sandstone retaining walls, high quality entry statement and landscaping. Crest Estate, a new subdivision is setting the benchmark for urban living standards and development in Gympie. The welcome mat awaits homemakers and astute investors wishing to live the dream. Located in the established and quality suburb of Southside, Crest Estate is a boutique residential infill estate – located only minutes to nearby shopping, schools and the CBD. Crest Estate has been designed to capture and maximise the natural landform, views and the prevailing breezes. In order to enhance your quality of lifestyle and investment, an easy to use set of covenant conditions has been thoughtfully considered to ensure quality homes will be built to a high standard.

**Price** SOLD for \$355,000  
**Property Type** Residential  
**Property ID** 929  
**Land Area** 680 m<sup>2</sup>

### AGENT DETAILS

Keryn Angle - 0434 379 533  
 Pete Angle - 0438 864 158

### OFFICE DETAILS

One Agency Gympie  
 0438 864 158



Although ONE Agency Gympie has provided all information related to this property to the best of our knowledge and resources, we shall not be held accountable or responsible for its accuracy. ONE Agency Gympie urge all buyers to conduct their own independent research and consult their own professionals to conduct due diligence before purchasing.

The above information provided has been furnished to us by the vendor/s. We have not verified whether or not that information is accurate and do not have any belief in one way or the other in its accuracy. We do not accept

*any responsibility to any person for its accuracy and do no more than pass it on. All interested parties should make and rely upon their own inquiries in order to determine whether or not this information is in fact accurate.*