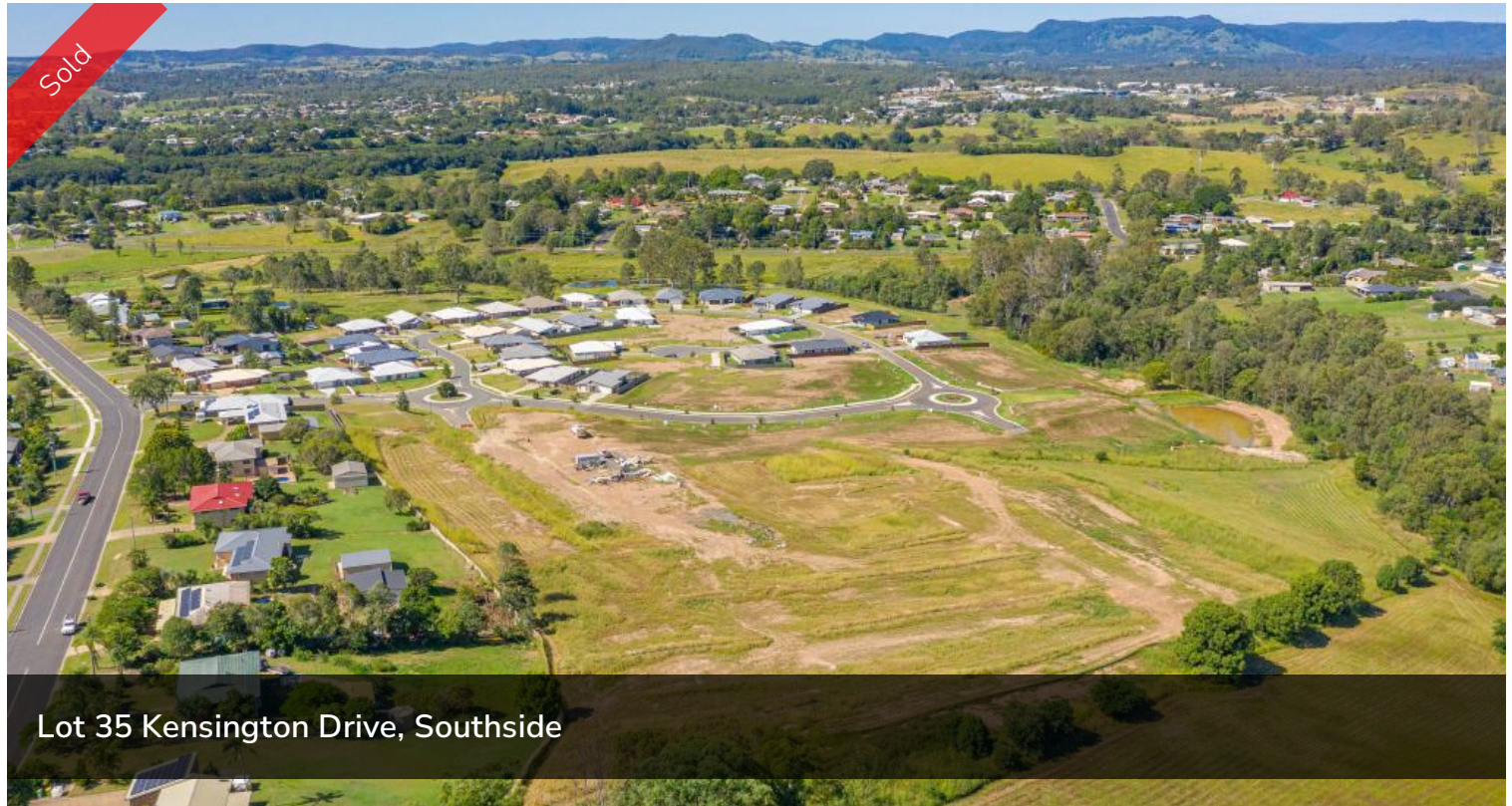


Sold



Lot 35 Kensington Drive, Southside



## FINAL STAGE OF SOVEREIGN HEIGHTS ON SALE NOW!

Stage 6 the FINAL stage of Sovereign Heights is here! Register your interest today for this popular estate as it is already selling quickly! An estate where you can combine contemporary living amongst a picturesque setting. Stages 3, 4, 5 and 7 of this sought after estate has SOLD out. Lots vary in size from 633m<sup>2</sup> to 1059m<sup>2</sup>! With level blocks that are ready to go these sell quickly. No need to travel to enjoy established amenities as Southside has a mix of shopping, dining, medical facilities and schools. Only 5 minutes to Gympie's CBD or 45 minutes to Noosa, Rainbow Beach and more this ideally located suburb is the fresh start you have been dreaming of... there is no better place to create your very own home.

Although ONE Agency Gympie has provided all information related to this property to the best of our knowledge and resources, we shall not be held accountable or responsible for its accuracy. ONE Agency Gympie urge all buyers to conduct their own independent research and consult their own professionals to conduct due diligence before purchasing.

*The above information provided has been furnished to us by the vendor/s. We have not verified whether or not that information is accurate and do not have any belief in one way or the other in its accuracy. We do not accept any responsibility to any person for its accuracy and do no more than pass it on. All interested parties should make and rely upon their own inquiries in order to determine whether or not this information is in fact accurate.*

662 m<sup>2</sup>

**Price** SOLD for \$180,000  
**Property Type** Residential  
**Property ID** 265  
**Land Area** 662 m<sup>2</sup>

### AGENT DETAILS

Pete Angle - 0438 864 158  
Keryn Angle - 0434 379 533

### OFFICE DETAILS

One Agency Gympie  
0438 864 158

**ONE** AGENCY  
GYMPIE